



Lesson Preparation for Adult Learners with Dyslexia

Strategies and tools to empower
unique learning needs

Agenda Highlights

- Initial Student Assessment and Goal Setting
- Designing Individualized Learning Plans
- Empowering Students with GenAI and Digital Tools
- Scenario 1: Supporting University Students with Dyslexia
- Scenario 2: Helping Professionals Overcome Workplace Challenges
- Scenario 3: Customizing Learning for Tradespeople and Small Business Owners
- Ongoing Support and Tracking Progress Over Five Sessions
- Best Practices and Key Takeaways for Instructors



Initial Student Assessment and Goal Setting



Effective Strategies for Initial Conversations

Building Trust

Active listening and empathy are essential to build trust and open dialogue in initial conversations.

Effective Communication

Clear communication facilitates understanding and encourages openness during early interactions.

Open-Ended Questions

Using open-ended questions helps uncover learner needs and personal experiences effectively.

Identifying Personal, Academic, and Professional Goals



Clarify Life Goals

Help learners identify clear goals in personal, academic, and professional areas for focused growth.



Align Learning Plans

Ensure learning activities match learners' goals to increase motivation and relevance.



Motivate Through Relevance

Use goal alignment to engage learners and encourage sustained effort and achievement.



Documenting Learning Preferences and Strengths

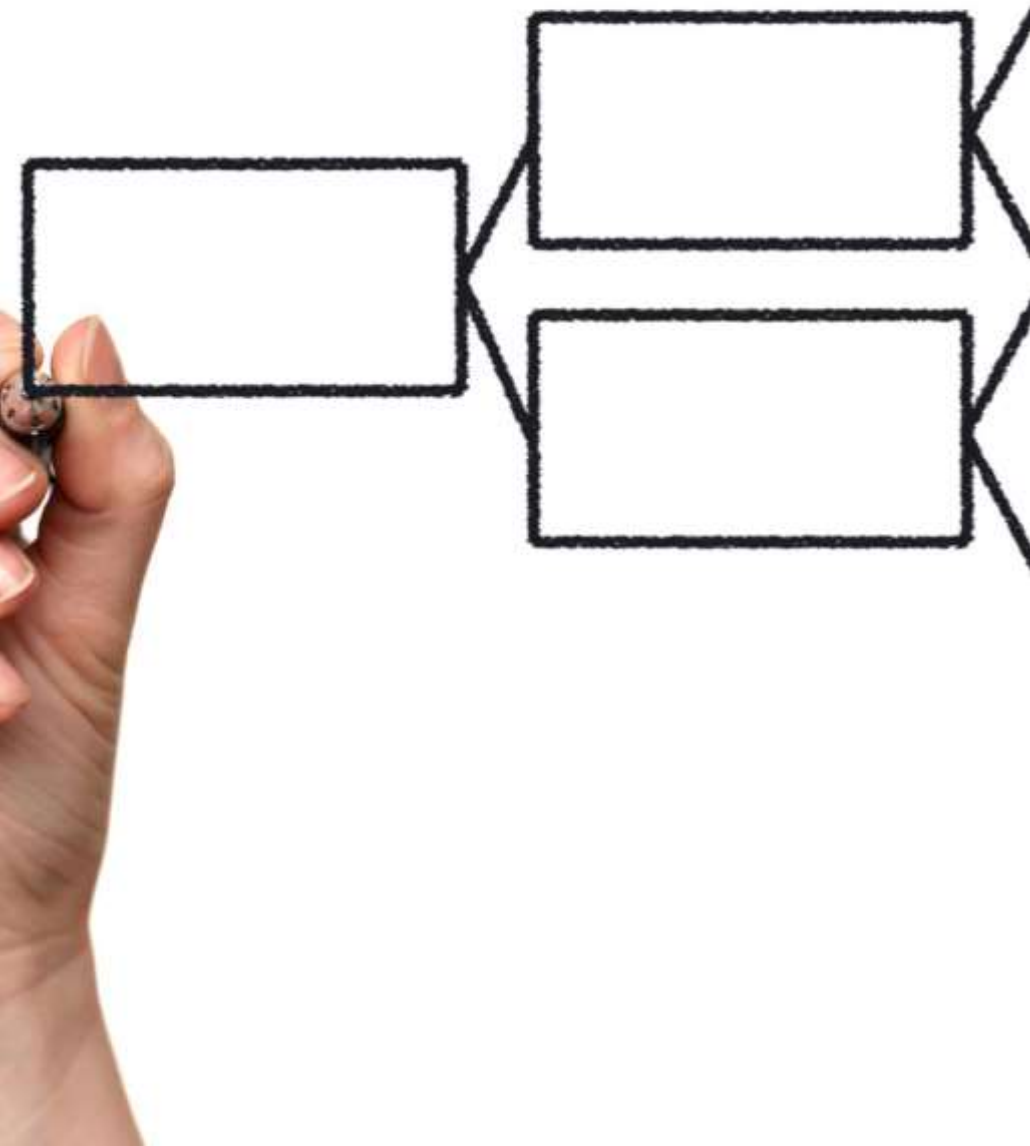
Assess Strengths and Challenges

Recognize individual strengths and challenges to adapt lessons and provide appropriate accommodations.

Inform Lesson Design

Use documented preferences and strengths to design lessons that promote learner engagement and success.

Designing Individualized Learning Plans



Structuring a Five-Session Lesson Plan

Progressive Skill Development

Each session builds upon the previous to gradually enhance learner skills and knowledge effectively.

Reflection and Adjustment

The framework incorporates time for reflection to assess progress and adjust teaching strategies accordingly.

Targeted Learning Objectives

Each session focuses on specific objectives aligned with the overall learner goals to ensure targeted outcomes.

Incorporating Student Goals Into Lesson Objectives

Align Outcomes with Goals

Ensure lesson outcomes are directly connected to the specific goals expressed by learners for relevance.

Maintain Lesson Relevance

Keep lessons relevant to students by incorporating their personal learning objectives effectively.

Track Measurable Progress

Use measurable indicators to monitor student progress aligned with their stated goals during sessions.



Selecting Tailored Activities and Materials

Accommodate Learning Preferences

Select activities that match individual learners' preferred learning styles for better engagement and comprehension.

Utilize Assistive Technologies

Incorporate tools like screen readers and adaptive devices to support learners with diverse needs.

Engage Learners Effectively

Choose tasks that motivate learners by being interactive and relevant to their interests and goals.



Empowering Students with GenAI and Digital Tools

Overview of GenAI Tools Relevant for Dyslexic Adults



Text-to-Speech Tools

AI applications convert written text into natural spoken language, aiding dyslexic adults in reading and comprehension.

Speech-to-Text Tools

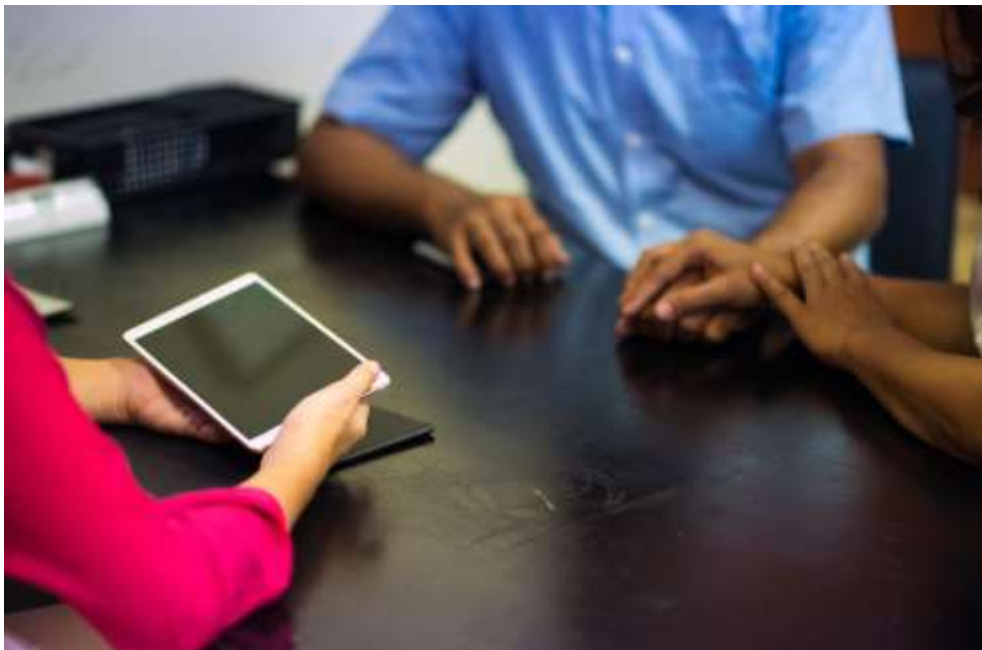
AI-powered speech recognition transforms spoken words into written text for easier communication and note-taking.

Grammar and Summarization

Advanced AI tools provide grammar correction and summarize lengthy text, improving reading efficiency and writing accuracy.

Personalized Learning Support

AI tailors learning experiences to individual needs, enhancing understanding and retention for dyslexic adults.



Teaching Students How to Use Assistive Technology Effectively

Guided Instruction

Offer structured guidance to help learners understand assistive technology features and usage effectively.

Practical Application

Encourage hands-on use of digital tools to build confidence and skill through real-world tasks.

Troubleshooting Skills

Teach students methods to identify and solve common technical issues independently.

Maximizing Benefits

Help learners leverage assistive technology to enhance their learning outcomes and independence.



Encouraging Self-Advocacy and Independent Learning

Understanding Learning Needs

Learners should be encouraged to identify and understand their unique learning styles and needs effectively.

Requesting Accommodations

Empower learners to confidently request necessary accommodations to support their educational success.

Taking Charge of Learning

Encourage learners to take an active role in their education and advocate for their goals independently.

Scenario 1: Supporting University Students with Dyslexia



Identifying Academic Challenges and Priorities

Reading Volume

Students face challenges managing large volumes of reading material within limited timeframes.

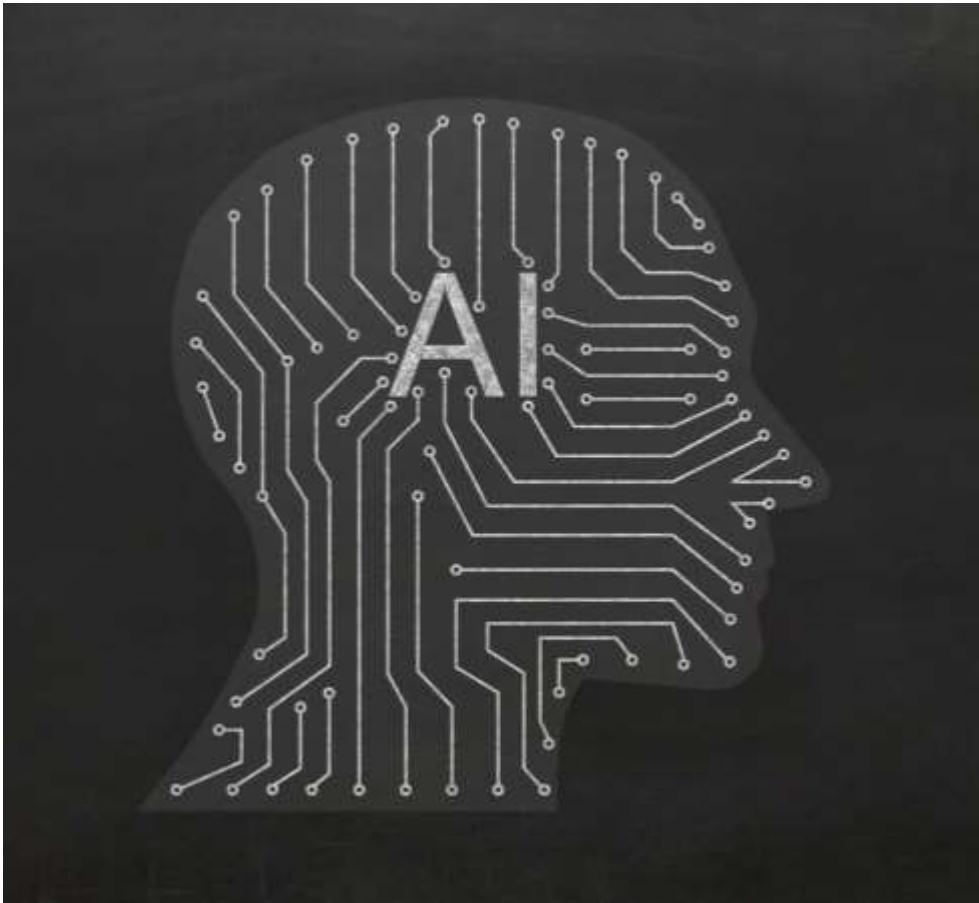
Writing Assignments

Writing multiple assignments requires organization and time management to meet academic standards.

Deadline Management

Managing multiple deadlines is critical to avoid stress and ensure timely submission of work.

Integrating GenAI Tools for Reading, Writing, and Organization



AI for Note-Taking

GenAI tools can efficiently assist in capturing and organizing notes during reading and lectures.

Essay Drafting Support

AI helps generate and refine essay drafts, improving writing speed and quality.

Summarizing Readings

AI tools summarize lengthy readings to highlight key points and improve comprehension.

Organizing Study Schedules

AI assists in planning and organizing study schedules to optimize productivity and time management.



Case Study: Creating a Personalized Study Plan

Assess Academic Requirements

Identify the courses and topics needed to fulfill academic goals and graduation criteria.

Evaluate Individual Strengths

Analyze personal skills and learning preferences to tailor the study plan effectively.

Design Balanced Schedule

Create a study timetable balancing coursework demands with individual learning pace and breaks.

**Scenario 2: Helping
Professionals
Overcome
Workplace
Challenges**



Understanding Workplace Demands for Dyslexic Adults

Reading Technical Documents

Dyslexic adults often face difficulty reading and comprehending complex technical documents in the workplace.

Verbal Communication Challenges

Verbal communication can be challenging due to processing and expression difficulties affecting workplace interactions.

Time Management Issues

Managing time effectively is a common challenge that impacts productivity and task completion for dyslexic adults.

Adapting Workplace Communication and Documentation Tools



Email Management Tools

Digital tools streamline email organization and communication, increasing workplace efficiency and reducing errors.



Reporting Automation

Automated reporting tools simplify data analysis and presentation, saving time and improving accuracy.



Scheduling and Calendar Apps

Scheduling tools help manage appointments and deadlines effectively, fostering better time management and confidence.

Role-Playing Common Workplace Scenarios

Simulated Meetings Practice

Role-playing meetings helps improve active listening and collaborative decision-making skills.

Presentation Skills Development

Practicing presentations boosts confidence and clarity in delivering messages to an audience.

Conflict Resolution Training

Role-playing conflict resolution enhances problem-solving and emotional intelligence in workplace interactions.



**Scenario 3:
Customizing Learning
for Tradespeople and
Small Business Owners**

Exploring the Unique Needs of Trades and Services Sectors

Invoice Management Challenges

Tradespeople often face difficulties organizing and managing invoices efficiently in their daily operations.

Scheduling Difficulties

Scheduling appointments and jobs is a critical challenge for trades and services sectors requiring effective tools.

Customer Interaction Needs

Maintaining smooth customer communication is essential for small business owners in trades and services sectors.



Applying GenAI Tools for Scheduling, Invoices, and Customer Communication

Streamlining Scheduling

AI tools automate appointment and resource scheduling, increasing efficiency and reducing errors.

Automated Invoicing

AI-driven software simplifies invoice generation and management, speeding up payment cycles.

Enhanced Customer Communication

AI applications support personalized and timely communication, improving customer satisfaction.



Real-World Example: A Plumber's Path to Digital Literacy

Personalized Learning Plans

Customized learning plans cater to the plumber's unique skills and knowledge gaps, fostering effective skill development.

Technology Integration

Adopting digital tools in plumbing enhances efficiency and supports career advancement through modern techniques.

Career Growth Impact

Integrating technology and personalized learning empowers the plumber to advance professionally and adapt to industry changes.



**Ongoing Support
and Tracking
Progress Over
Five Sessions**

Setting Progress Checkpoints and Feedback Loops

Regular Progress Reviews

Consistently evaluating learner progress helps identify achievements and areas requiring improvement.

Feedback Loop Importance

Feedback loops enable adjustments and foster continuous development of learning strategies.



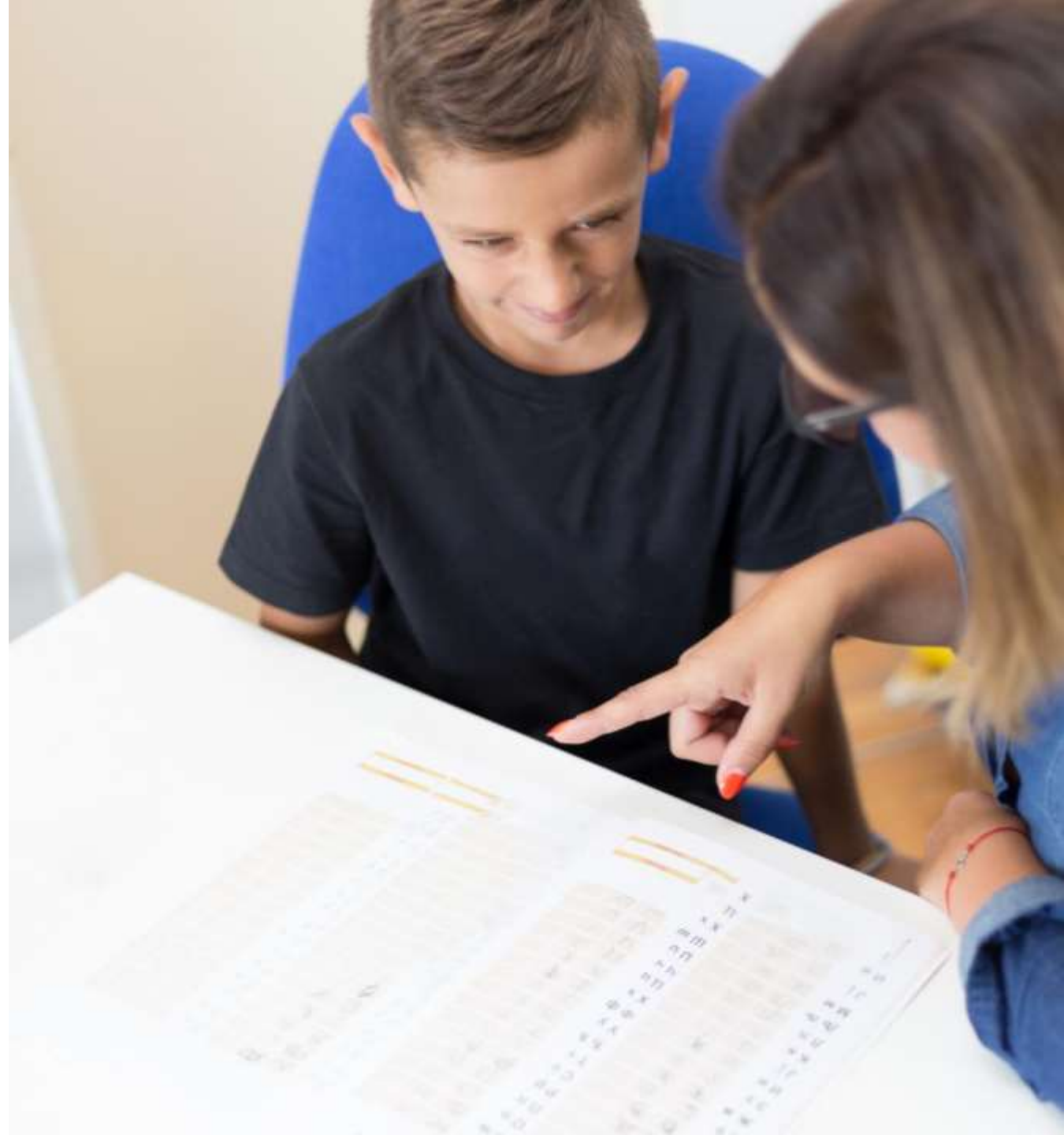
Adjusting Lesson Plans Based on Student Input

Flexibility in Teaching

Teachers must stay flexible to modify strategies based on student feedback and learning progress.

Responding to Learner Needs

Adapting instructional materials helps meet the evolving needs of diverse students effectively.



Celebrating Milestones and Building Confidence

Recognize Learner Progress

Acknowledging achievements helps boost learners' confidence and motivates further learning.

Rewarding Achievements

Providing rewards encourages learners to stay committed and engaged in their learning journey.

Boosting Confidence

Celebrations of milestones build self-esteem, fostering a positive attitude toward learning.



Best Practices and Key Takeaways for Instructors

Adapting to Diverse Learning Styles and Backgrounds

Recognize Learner Diversity

Acknowledging diverse cultural and educational backgrounds helps tailor teaching methods effectively.

Customize Teaching Approaches

Adapting teaching styles to different learning preferences improves engagement and comprehension.

Maximize Learning Effectiveness

Respecting individual needs enhances participation and knowledge retention in diverse classrooms.





Encouraging Open Dialogue and Collaboration

Supportive Learning Environments

Fostering safe spaces encourages learners to openly share challenges without fear of judgment.

Open Communication

Promoting dialogue helps learners express ideas and concerns freely for better understanding.

Collaborative Problem Solving

Working together enables learners to overcome challenges effectively through shared effort.



Fostering Independence and Lifelong Learning Skills

Autonomous Learning Strategies

Teach learners methods to plan, monitor, and evaluate their own learning independently.

Sustaining Lifelong Skills

Encourage continuous skill development that extends beyond formal education settings.

Conclusion: Empowering Adult Learners with Dyslexia

Personalized Instruction

Tailored, goal-oriented teaching meets unique needs of adults with dyslexia for effective learning.

Assistive Technologies

Use of innovative tools enhances reading, writing, and comprehension skills for learners with dyslexia.

Ongoing Support

Continuous encouragement and resources empower success in academic, professional, and personal life.